



# HABITAT LENS PRIVATE LIMITED

ADDING MORE TO LIFE



7278243913  
9748329807

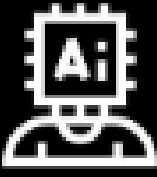


[www.habitatlens.in](http://www.habitatlens.in)  
[contact@habitatlens.in](mailto:contact@habitatlens.in)



## COMBINED EARTH OBSERVATION AND GEOSPATIAL ANALYTICS

Urban and Forest Plantation | Agricultural Research & Advocacy | GIS & Drone mapping



## AI SOLUTIONS

Regional models and Forecast | AI models for image and pattern recognition AI driven Land use Predictions | Perception Analysis



## CONSERVATION ACTION & RESEARCH

Protected Area Management Plan | Species Recovery Plan Action plan for Human-Wildlife Conflicts | Habitat Restoration Corridor Identification | Species Translocation



## TRAINING & EXERCISE

Training on GIS | AI | Machine Learning at Advanced Level for students & Professionals

Habitat Lens Pvt. Ltd. is a dynamic and forward-thinking company dedicated to providing innovative solutions and consultancy services in the fields of environmental science, sustainable development, and technological advancement. As a versatile entity, we operate as both a service provider and consultant, offering expert guidance, cutting-edge technology development, and strategic insights to our clients. Our comprehensive suite of services encompasses various sectors, including agriculture, climatology/meteorology, forestry, geology & hydrology, , marine & coastal management, sociology/demography, machine learning & artificial intelligence, nature-based solutions, innovation & technological solutions, drone-based survey & analysis, and training awareness & education.

# OUR DIVISIONS



**Combined Earth Observation  
&  
Geospatial Analytics**

Combined Earth Observation and Geospatial Analytics at Habitat Lens Private Limited provides comprehensive environmental and geospatial solutions, including EIA, biodiversity evaluations, carbon credit restoration, drone mapping, agricultural solutions, climate adaptation, forest management, and wildlife conservation, promoting sustainable development and regulatory compliance.

At Habitat Lens Private Limited, our AI Solutions division enhances environmental and geospatial services with AI-driven tools for precision agriculture, climate forecasting, geo-spatial mapping, hydrological modeling, and wildlife conservation, promoting sustainable practices, data accuracy, and operational efficiency.



**CONSERVATION ACTION  
&  
RESEARCH**



The Conservation Action & Research division at Habitat Lens Private Limited focuses on biodiversity conservation and sustainable environmental management. We mitigate human-wildlife conflicts, manage protected areas, and conduct surveys to support conservation planning and biodiversity monitoring, ensuring ecological balance and harmonious coexistence between humans and wildlife.

Habitat Lens Private Limited's Training and Exercise Division offers tailored programs in GIS, AI, machine learning, and coding. From foundational to advanced levels, our hands-on training equips participants with skills to analyze spatial data, apply AI algorithms, and develop software solutions, fostering career growth and innovation in environmental analytics.







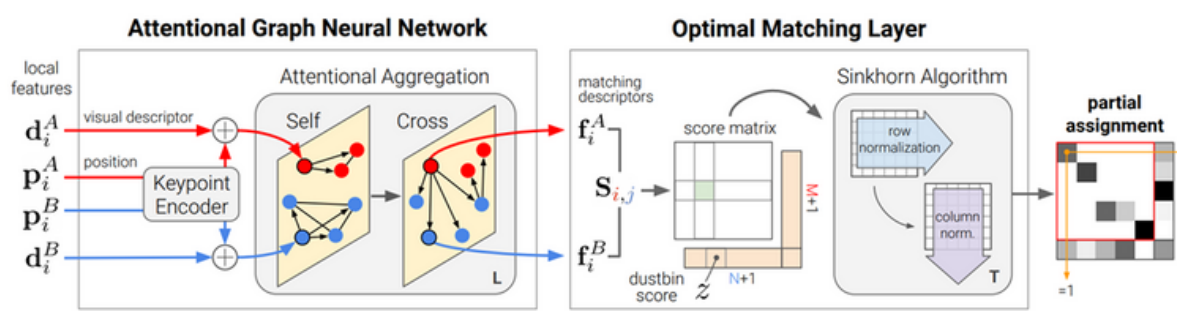
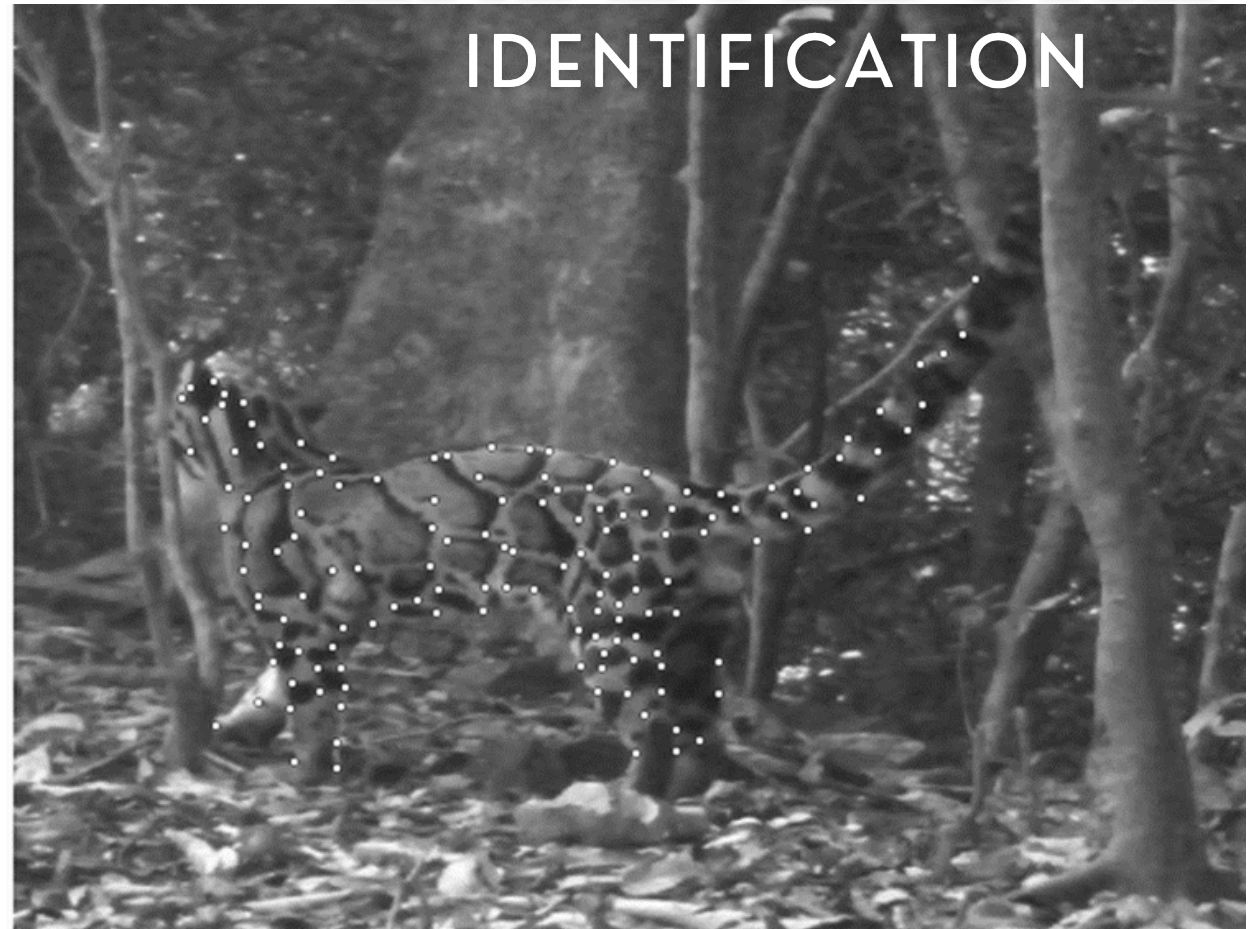
# HABITAT LABS

## INDEIVIDUAL

## IDENTIFICATION

# Super Glue

### Technology



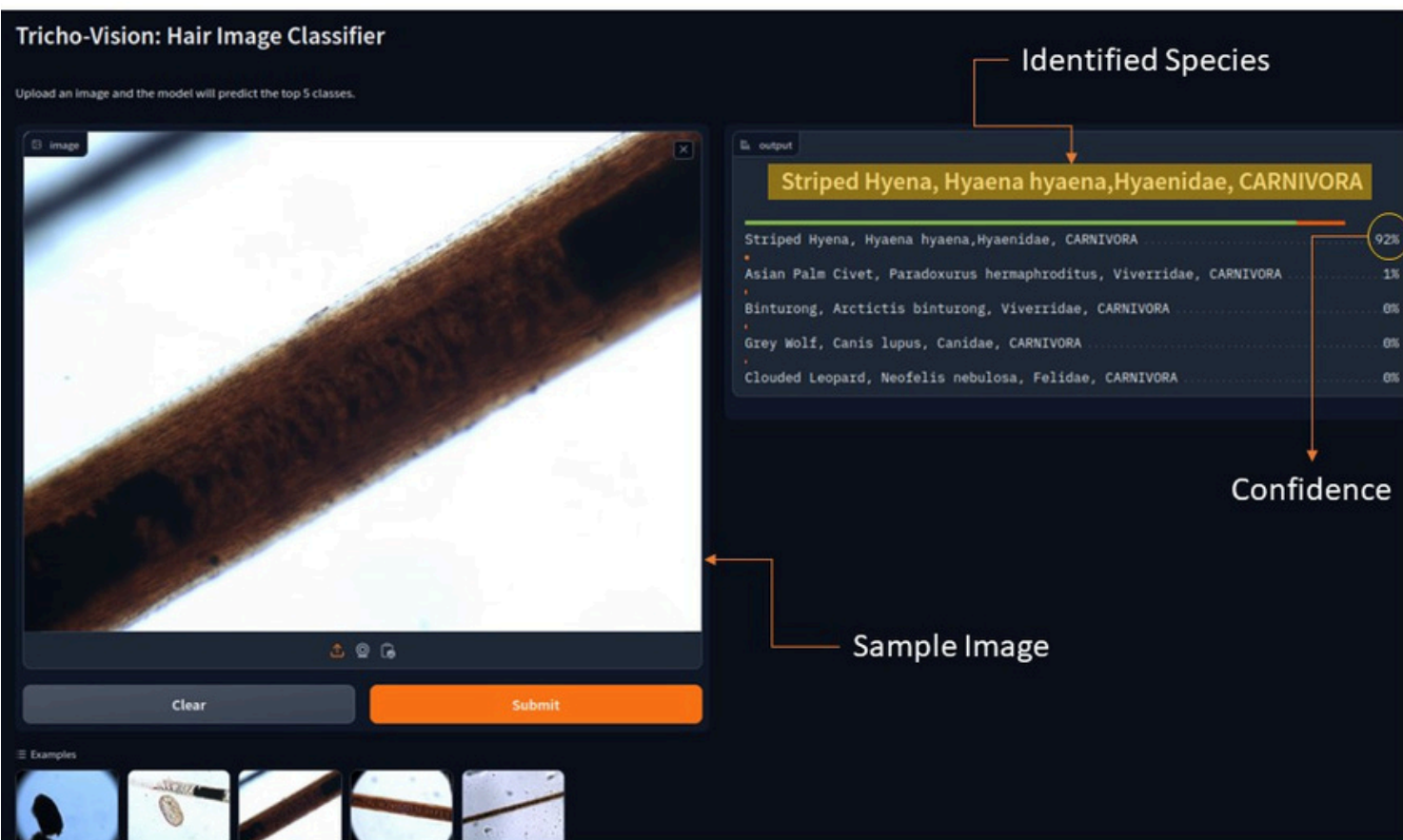
# 85% ACCURACY

FIELD TESTED



## WILD SPECIES DETERRENT

## TRICHO-VISION



Tricho-Vision serves as a pioneering tool that leverages advanced computer vision to identify mammalian species based on microscopic hair characteristics, addressing crucial challenges in wildlife conservation and forensic science. By analysing hair cuticle patterns, medulla structure, and other key features using machine learning models like Convolutional Neural Networks (CNNs) and Vision Transformers (ViTs), the framework provides accurate identification across taxonomic levels, from species to order. This ability aids law enforcement agencies in curbing wildlife crime, supports researchers in studying biodiversity, and enhances conservation strategies for species at risk. The Tricho-Vision framework demonstrates the power of artificial intelligence in wildlife protection, serving as a vital resource for monitoring biodiversity, investigating wildlife crime scenes, and understanding ecosystem dynamics. Its application ensures that endangered and protected species receive the attention needed for survival and enforcement of international conservation laws.

CC-15 Regent Park, Rahara, Khardah, North 24 Parganas- 700118, West Bengal.

7278243913

9748329807

contact@habitatlens.in